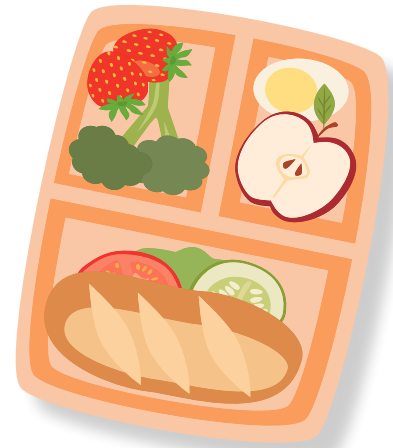


# Child and Adult Care Food Program

The Child and Adult Care Food Program (CACFP) is a federal program that provides reimbursements for nutritious meals and snacks served to eligible children and adults who are enrolled for care at participating child care centers, day care homes and adult day care centers. CACFP also provides reimbursements for meals served to children and youth participating in afterschool care programs and children residing in emergency shelters.

The CACFP helps institutions serve well-balanced, nutritious meals to the participants in their care. Serving nutritious meals and snacks helps improve and maintain the health and nutritional status of participants and can help them develop and maintain good eating habits. The U.S. Department of Agriculture (USDA) funds the program. The Minnesota Department of Education (MDE), Food and Nutrition Service administers the program.



## Which organizations can participate?

### *Child Care Centers*

- Schools, public or private nonprofit child care centers, outside school hours care centers, Head Start programs, and other institutions that are licensed or approved to provide nonresidential child care services.
- For-profit care centers serving at least 25% low-income participants.

### *Adult Day Care Centers*

- Public or private nonprofit adult day cares that are licensed and provide structured, comprehensive day care services to nonresident adults who are age 60 and older or are functionally impaired.
- For-profit adult care centers that are licensed and serving at least 25% low-income participants.

### *Family Day Care Homes*

- Licensed, nonresidential child care program operated in a private home.

### *At-Risk Afterschool Care Centers*

- Centers located within the attendance area of a school where at least 50% of the children in the school are eligible for free or reduced price meals.
- Schools, public or private nonprofit child care centers, legally unlicensed afterschool care programs and for-profit licensed child care centers operating CACFP and serving at least 25% low income participants;
- Afterschool care programs provide organized childcare services with age-appropriate educational or enrichment activities for children after school or on weekends, holidays or vacation breaks during the school year in a structured and supervised setting.

### *Emergency Shelters*

- Public or private nonprofit emergency shelters that provide residential services to children experiencing homelessness.

*Additional information on site eligibility on backside.*

# Child and Adult Care Food Program



## How does it work?

There are three ways for centers to participate in CACFP, as an:

1. Independent Center;
2. Site under a Sponsoring Organization; or,
3. Sponsoring Organization.

Sponsoring Organizations and Independent Centers are generally referred to as Sponsors that enter into agreement directly with MDE. A Sponsoring Organization provides administrative, financial and operational oversight for CACFP at multiple sites or one or more legally separate sites. Family Day Care Homes can only participate under a Sponsoring Organization.

## What are the meal and snack requirements?

All meals and snacks must meet USDA meal pattern requirements for food groups and portion size for the age group served. View the meal patterns at <https://education.mn.gov/MDE/dse/FNS/prog/CACFPGen/ops/meal/>.

- Child Care Centers: Children age 12 and under, migrant children age 15 and under and persons with disabilities of any age, up to two meals and one snack or two snacks and one meal daily.
- At-Risk Afterschool Care: Children age 18 and under participating in the afterschool care program, up to one meal and one snack daily.
- Adult Care Centers: Adults who are enrolled in adult day care and are at least 60 years of age or are functionally impaired up to two meals and one snack or two snacks and one meal daily.
- Emergency shelters: Resident children age 18 and under, up to three meals daily.

## How does reimbursement work?

Sponsors receive reimbursement each month based on the number of eligible meals and snacks served. The USDA establishes reimbursement rates annually. CACFP Reimbursement rates can be found at <https://education.mn.gov/MDE/dse/FNS/prog/CACFPGen/Claim/>.

## How do organizations apply?

Child care centers, adult care centers, afterschool care program operators, and emergency shelters can apply to participate in CACFP through a sponsoring organization or they can apply directly to MDE. Visit our websites for more information.

CACFP: <https://education.mn.gov/MDE/dse/FNS/prog/>

At-Risk Afterschool Meals: <https://education.mn.gov/MDE/dse/FNS/prog/After/>

**Email:** [mde.fns@state.mn.us](mailto:mde.fns@state.mn.us) | **Call:** 651-582-8526 or MN toll-free 800-366-8922